

## Carrier 30 RA 040

### Specifications

Brand	Carrier
Type	30 RA 040
Product type	Air Cooled Chiller
Capacity kW	39.3
Capacity Tons	11.2
Refrigerant	Freon
Refrigerant Type	R 407 C
Weight in kg.	526 kg.
Sizes	2100x1300x1330 mm (LxWxH)
Remarks	Year of Manf: 2000
Stock	1



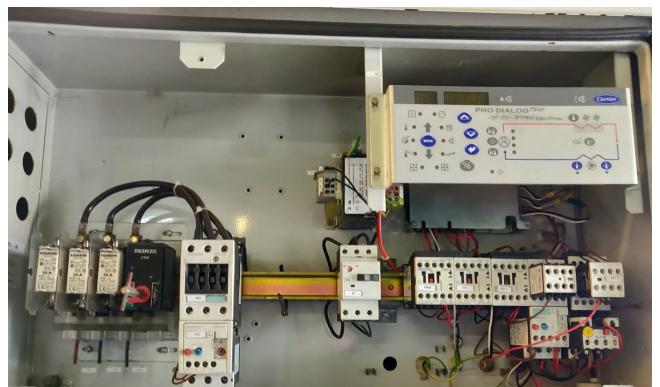
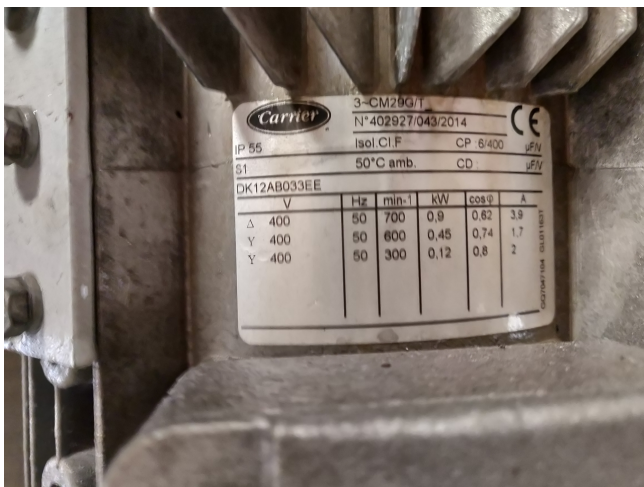
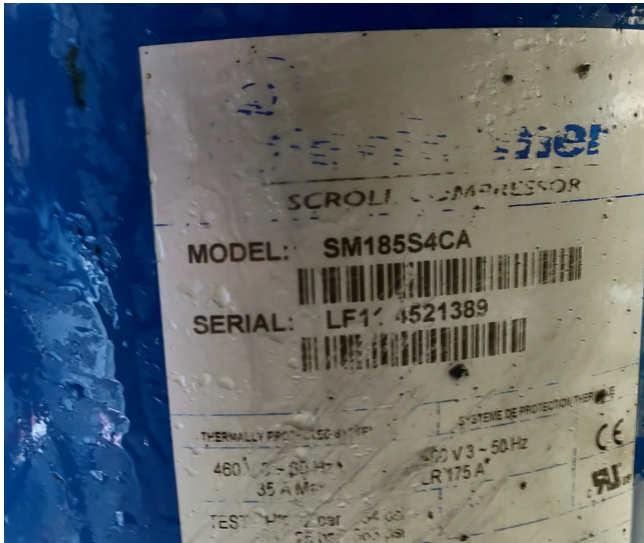
### Description

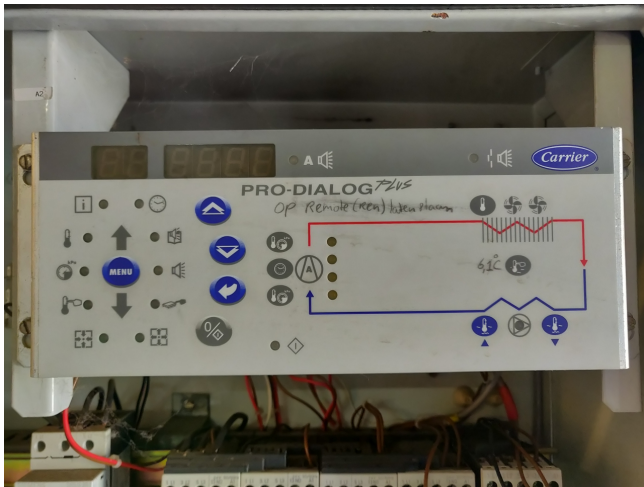
#### Used Carrier 30 RA 040

Compressors: 1 pieces Scroll Performer SM185S4CA Refrigerant:R407C  
Type:Air-Cooled Heat exchanger: 1 pieces Tons:11.2 Size: 2100x1300x1330 mm (LxWxH) Weight: 526 KG Yob: 2000 Brand:Carrier Model:30 RA 040 \*\*All components of this used chiller will be tested on good working, leak free condition (condensing block), compressor, control panel, etcetera). Choosing HOSBV means buying with warranty. We perform a industrial cleaning and rust spots will be covered. Also, we can arrange your shipment.









**Carrier s.a.**  
BP 49 Route de Thal  
01120 Monthuel (FRANCE)  
Tel : 33 (0) 4 72 25 21 08  
Fax : 33 (0) 4 72 25 23 88

**LISTE DE PIÉCES  
SPARE PARTS LIST**

REF: 30RA-040-0129R-EE--  
S/N: 12T010822

Date : 05/06/00 Page : 1/

SOUS-ENSEMBLE KIT ASSEMBLY	CARRIER REFERENCE PART NUMBER	QTY	DESCRIPTION		
			TYPE	SPECIFICATION	REFERENCE
	32GB-500---052---EE--	1	CARD -REGULATION-	BASIC PRODIALOG	
	32GB-500---062---EE--	1	CARD CCM CLOCK BOARD		
	--DQ--12CA-018---EE--	1	COMPRESSOR SCROLL	400V/50HZ/R22	SM185-4C
	--XA--12DM-016---EE--	1	EXPANSION VALVE	R22	7/8"1 1/8"
	--XN--12EA-022---EE--	1	FILTER -DRIER-		
	--BA--12LA-002---EE--	2	FLEXIBLE COLLAR	2" (DIA.60,3)	
	--CY--12HA-006---EE--	1	FLOW SWITCH		
	--UM--12NA-003---EE--	1	FUSE PLUG	3/8 NPT	
	30RA-501---122---EE--	1	HEATER -EXCHANGE PLATES-	85W/400V	+KIT HYDRO
	--DK--12AB-033---EE--	1	MOTOR -FAN-	750W 400V	
	30GX-415---402---EE--	1	PROPELLER FAN	FLYING BIRD III	
	-----541---EE--	10	REFRIGERANT	R22	KG
	--HH--79WZ-047---C---	3	SENSOR -TEMPERATURE-	76MM	RTM
	--XS--12CA-002---EE--	1	SIGHT -LIQUID-		
	--WB--12KN-019---EE--	1	SWITCH -HP MANUAL-	29B	SPM
	32GB-500---082---EE--	1	SYNOPTIC 1 CKT	AIR COOLED	
	--OP--12DA-039---EE--	1	TRANSDUCER HP		
	--OP--12DA-040---EE--	1	TRANSDUCER LP-OIL		
	--XL--12AL-002---EE--	1	VALVE -ANGLE-	7/8	
	--XL--12AL-003---EE--	1	VALVE -ANGLE-	1 1/8	
	--EC--39DM-061---C---	7	VALVE-CHECK BODY-	1/4 SAE	
	--EC--39DM-062---C---	4	VALVE-CHECK PISTON-		

This is to certify that the product detailed underneath has been satisfactorily inspected and tested in accordance with the relevant Carrier drawings and specifications.  
When referring to this product, please mention model and serial numbers.  
Nous certifions que le produit indiqué ci-dessous a été contrôlé et essayé conformément aux plans et spécifications Carrier et que les résultats sont satisfaisants.  
Pour toute remarque concernant ce produit, veuillez indiquer ses numéros de modèle et de série.

CAR 1 GAF 6/00

MODEL N° N° de MODÈLE	30 RA 040 0129 REE
SERIAL N° N° de SÉRIE	12 T 010822
CONTROL POINTS POINTS DE CONTRÔLE	VISA
PRESSURE TEST AND LEAK TEST TEST DE PRESSION ET DETECTION	SPM
VACUUM AND REFRIGERANT CHARGE TRAPPE AU VIDE ET CHARGE REFRIGERANT	SPM
HIGH POTENTIAL AND RUNNING TEST ESSAI DIELECTRIQUE ET TEST DE FONCTIONNEMENT	JS
GENERAL INSIDE AND OUTSIDE APPEARANCE	